



⚠ WARNING: READ ALL WARNING & SAFETY INSTRUCTIONS BEFORE ASSEMBLING CRIB. KEEP INSTRUCTIONS FOR FUTURE USE.

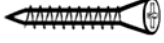

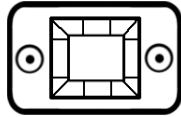

First remove hardware from box and sort by size. Check to see that all hardware and wooden pieces are present before assembling. Follow instructions listed below in the proper sequence as numbered to assure fast, easy and correct assembly.

⚠ WARNING!

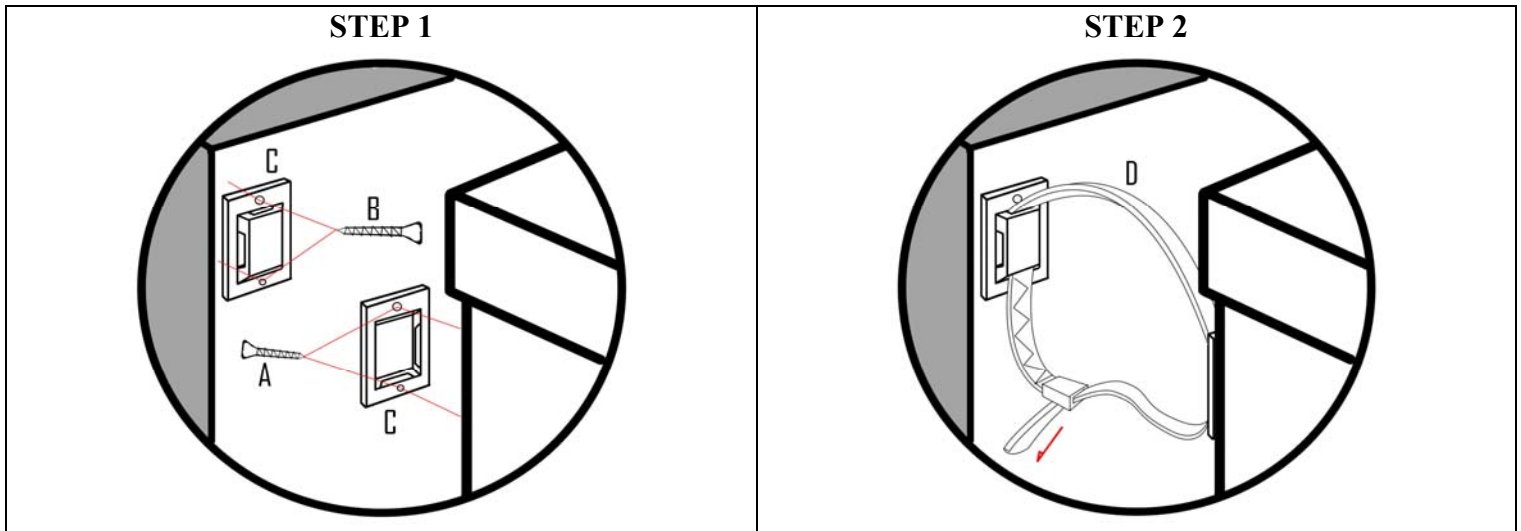
1. DO NOT attempt to repair or modify parts with cracks or defects. Please contact us for immediate replacement.
2. This product is for home use and is not intended for use in schools, day care centers or other commercial establishments.
3. Must be assembled by a capable adult.

KEEP THE INSTRUCTIONS FOR FUTURE USE

◆ **HARDWARE**

<p>1. Screw 6# x 3/4" (4 pcs)</p> 	<p>2. Screw 6# x 1-1/2" (4 pcs)</p> 	<p>3. Bracket (4 pcs)</p> 	<p>4. Strap (2 pcs)</p> 
---	---	--	---

◆ **ASSEMBLY**



▲ **Care and Cleaning:**

Do not scratch or chip the finish. Do not use abrasive chemicals for cleaning. Clean with mild soap on a soft rag. Rinse and dry thoroughly. If you ever refinish this furniture, be sure to use only a non-toxic finish specified for children's products.

▲ **Storage:** The crib must keep in dry and clean area.